

Experience
Quality with
Confidence.



TIPPER GROUP

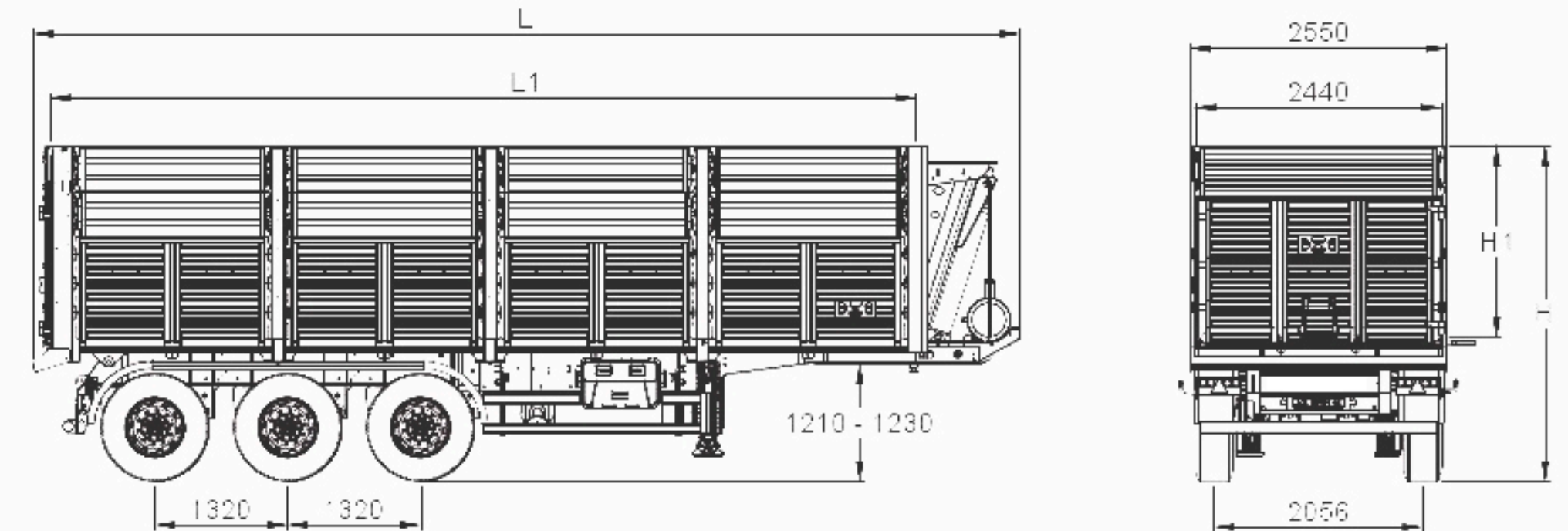
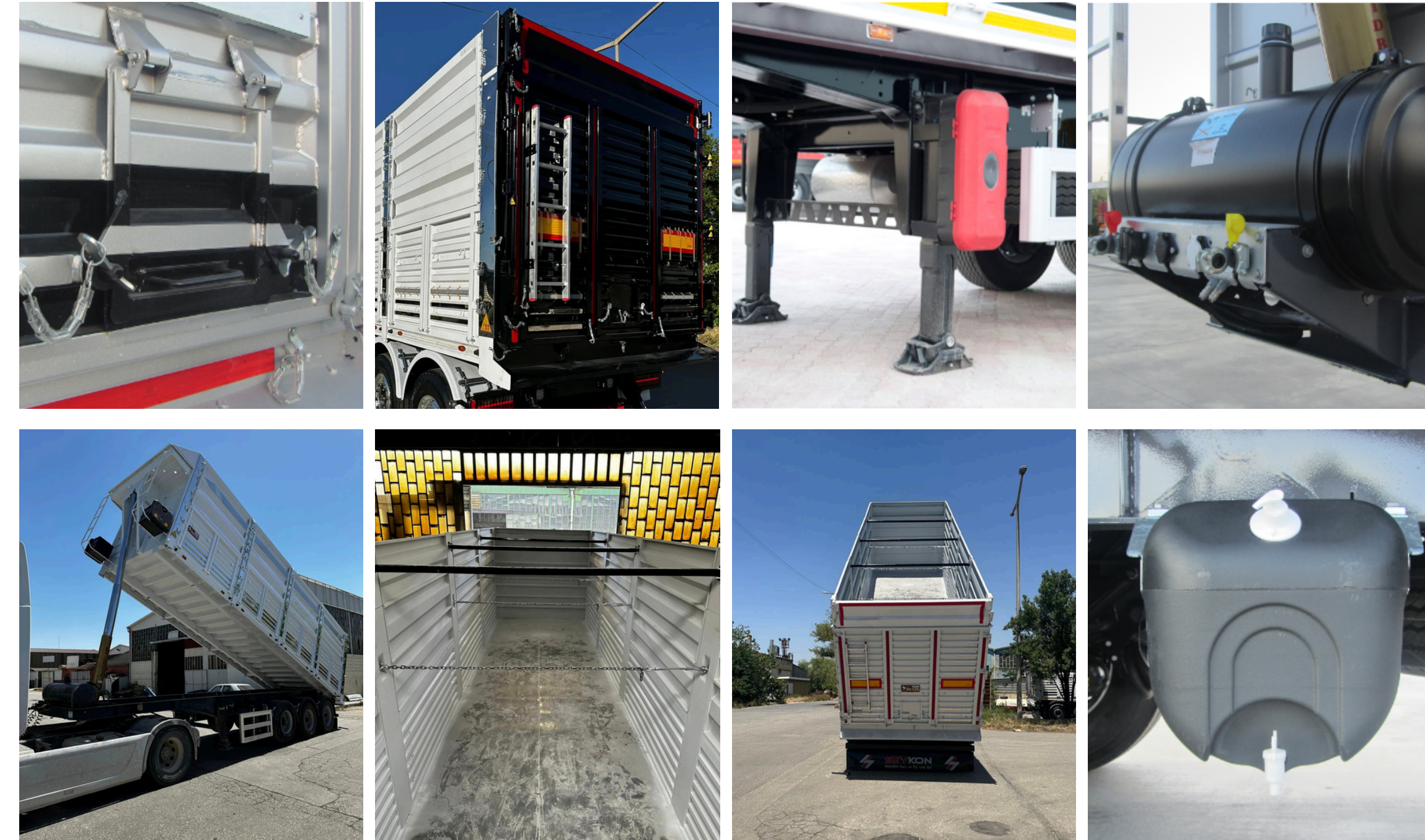
TIPPER WITH COVER

TECHNICAL SPECIFICATIONS



TIPPER GROUP

LENGTH	8.600 mm
TABLE HEIGHT	1.200-1.250 mm
TURNING YOU	100+40+40 disk : 6720 kg 100+45+45 bell : 6840 kg
AXLE	3*9000 kg carrying capacity, Drum or Disc Reis or Imported (BPW, SAF or Equivalent) AKS Group
CHASSIS	Specially manufactured for Reis, Reis Chassis made of high strength steel material with I-section, automatic submerged arc welding method and compliant with 98/91 EEC standards.
BRAKES	Automatic Load Adjustment Valve RSS (Corner Safety System) Brake System in accordance with 71/320 EEC and 2002/78 EC Standards
AXLE LIFTING	Front axle lifting system that prevents tire wear and provides ease of turning
MECHANICAL FOOT	24 Ton carrying capacity Double speed QRC Brand mechanical leg
KING PIN	2" Flanged type Imported (Saf, Jost or equivalent) King Pin in 94/20 EEC standards
REAR BUMPER	Dip galvanized (resistant to abrasion and rust) movable rear bumper, compliant with 70/221/EC Standards and tested (compatible with Asphalt pouring machine Finisher)
TIRES AND RIMS	6+1 pcs 385/65/22.5 Tubeless Tires, Steel Rims
SPARE WHEEL CARRIER	1 x Reducer
SUSPENSION SYSTEM	Height adjustment system with air lowering and lifting. Short scissors asphalt pouring machine finisher compatible shock absorber elements that limit excessive axle movement.
ELECTRICAL SYSTEM EQUIPMENT	3 amber colored lights on the sides, parking lights, license plate light, triangle reflector at the rear. (Electrical system, fully E-approved) 2 X 7 pin electrical socket *If the damper is open or opened while the vehicle is moving, it will be compatible with the visual warning system that gives an audible warning to warn the driver and is in the direct field of vision of the driver.
TOOLBOX	Plastic tool cabinet measuring 80x50x50 cm
WATER TANK	30 Lt Plastic Water Tank
SUPERSTRUCTURE	Heavy Duty Durable Base Sheet (Hardox & Raex) 4 pieces of 100+(40+40) (45+45) cm high high strength covers and additions on each side
HYDRAULIC SYSTEM	5-stage cold-drawn steel telescopic cylinder, limit control valve, directional valve, 150 lt oil tank and high pressure resistant hydraulic hose
MUDGUARD	Integrated with floor mats in accordance with Regulation 109/2011. 6 plastic full mudguards on each side
APPRECIATE	Manometer showing the axle group load according to the pressure in the airbag
OPTIONALS	Double Piston(8600), 3mm Base Plate, Coil Pool



NET LENGTH		COVER(cm)	1.ADDITION(cm)	2.ADDITION(cm)	CASE VOLUME(m3)	NET HEIGHT	
DRINK	EXTERNAL					DRINK	EXTERNAL
8600	9800	100	40		293	1400	2880
8600	9800	100	40	40	37,7	1800	3280
8600	9800	100	45	45	39,8	1900	3380



SEYKON MAKİNE SAN. VE TİC. LTD. ŞTİ

Fevzi Çakmak Mah. 10602. Sk. No: 16 Karatay/KONYA | +90 545 595 1663
 info@seykontreyler.com | export@seykontreyler.com

SEYKONTREYLER.COM

f /seykontreyler